

THE  
DOCUMENT  
COMPANY  
**FUJI XEROX**

Document Centre

506, 606 & 706



Technology that puts you in charge



# multifunction technology

## Embedded Web Server and Internet Protocol Printing (IPP) for Mobility

*"Mobility" is the key word in today's work environment. If you are not mobile, you are not up to speed. That's why the Document Centre 706/606/506 comes equipped with technologies that move with you.*

### Remote printing capability via IPP

IPP (Internet Protocol Printing) allows you or your counterpart from another company to print through the Document Centre 706/606/506 from any location via the internet. For instance, you can submit reports to the office without being physically present. This eliminates the usual fax process as documents can be printed directly with the IPP function. The result – increased productivity, output quality and cost efficiency.

### EWS Compliant

Through the EWS (Embedded Web Server), print jobs and run status can be monitored by each client through browsers, such as Netscape Navigator and Internet Explorer. This helps Network Administrators to understand and support your printing needs more effectively.

### Secure Print

Security is a big concern when it comes to confidential documents in a shared network printer environment. The Secure Print feature in Document Centre 706/606/506 offers peace of mind by utilising a password for confidential documents.

### Sample Printing

Sample Printing is a simple solution to control wastage and printing costs especially for bulk printing. This feature allows you to print just one set of documents for checking before proceeding to complete the print job.

## Speedy Office Solutions

*With an increasingly demanding work environment, you also need an office output system that is up to speed. The Document Centre 706/606/506 is the ideal solution to improve productivity without compromising on quality and reliability.*

### High Speed Network Printing

- Equipped with new CPU (Power PC8240 – 200MHz), 32 MB RAM and a HDD capacity of 12 GB to enhance your printing capability.
- Printing speeds of 50ipm, 60ipm and 70ipm support departmental and enterprise printing needs.
- Duplex printing at rated speed and output document up to A3 size are revolutionary and unmatched features.
- High speed transmission through 100Base-TX improves printing efficiency.

### High Speed Scanning

- Fast scanning speed of up to 75sheets/min enhances the conversion of paper documents to digital format.
- Scanning at Text, Halftone and Halftone/Text modes to suit various document needs.
- Versatile Duplex scanning up to A3 size.

### High Speed Copying

- FCOT (First Copy Out Time) of 2.7 sec boosts productivity since one-off copying contributes to the bulk of total office copying jobs.
- Copying speeds of 50ipm, 60ipm and 70ipm fulfill all your office copying needs.
- High speed duplex printing at rated speed and up to 70ipm enhances the output efficiency.
- S-SPIRE technology enables the user to reproduce a copy of similar quality to the original with the 9 micron toner and highly sensitive photoreceptor drum.
- High image quality of 600 x 600 dpi at 256 tones ensures high image quality.

### High Productivity

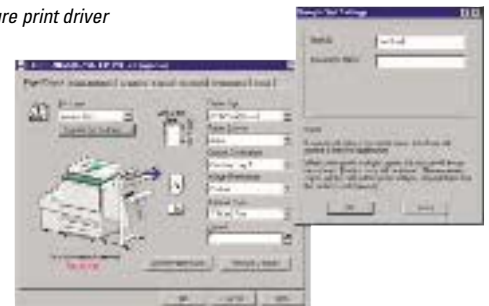
- High paper supply of up to 6050 sheets (with High Capacity Feeder) allows uninterrupted document production.
- Multi-tray feeder holds three different media (e.g. OHP film, colour stock or heavy stock) enabling users to print on different media at any one time.



Embedded web server



Secure print driver



Sample print driver



*The single portal for total office document solution*

## Modularity

*The Xerox Document Centre 706/606/506 is a space saving modular system that gives you the flexibility of protecting your investments and ensures that the system grows with your office needs. It can be a stand-alone copier or a fully networked document portal that is capable of high volume printing, scanning and copying. You can add the following options to suit your growing document needs:*

- Printer/Scanner kit.
- High Capacity Feeder to handle high-volume printing and copying. (DC 706 comes standard with a HCF)
- Finisher with puncher enables efficient mass processing and output management.  
(Option only for DC 506. DC 606 & DC 706 have a finisher as a standard accessory)



## User Friendly

*At the heart of it all, the Document Centre 706/606/506 is designed to ensure ease of use while maximising productivity and saving time.*

- Customised LCD screen allows you to configure up to 8 most frequently used functions so that you need not waste time going through multiple screens to execute a job.
- Easy-to-use printer driver dialogue box enables you to print and do automatic sorting, inserting of 'covers', booklet printing, watermark printing, stapling, punching. A host of other features can be accessed from your desktop with a click of your mouse.

## Environment-friendly

*The Document Centre 706/606/506 is equipped with numerous eco-friendly features.*

- Recyclable main components and consumables prevent depletion of natural resources.
- Low noise ensures an extremely quiet operation and prevents noise pollution.
- The air discharge from the machine is directed towards the floor, which ensures maximum safety and minimal discomfort in your work environment.
- Energy Star certification results in energy savings.

*The Document Centre 706/606/506 is at the heart of the total document flow in the office. Its superior design and technology, brings convenience at your fingertips.*





Worldwide Partner

# Document Centre

506, 606 & 706

## Specifications

### Printer

	Document Centre		
	706	606	506
Printing Speed – Single page/Multiple document/2 sided printing	70 ipm	60 ipm	50 ipm
Resolution/Halftone	600 x 600 dpi plus Edge Enhancement to 2,400 x 2,400 dpi/256 levels		
Paper Output	Up to A3 (11" x 17")		
2-sided printing/ Collate/Staple/Punch	Yes		
PDL/Connectivity	PCL5e/6, Adobe PostScript3/Bi-Centronics – Parallel		
Network Card	100BaseTX/10BaseT, Token Ring		
Network Protocols	SPX/IPX, TCP/IP, AppleTalk, SMB, IPP		
Hard Disk/RAM	12GB/32 MB		
Printer Driver	Win95, 98, WindowsME, NT4.0, 2000, Mac, Unix Filter.		
Printer Management	IETF MIB II compliant.		

### Scanner

Scan Size	A5, B5, A4, B4, A3, 8.5" x 11", 8.5" x 14", Auto Detection		
Scanning Method/Interface	Solid scanning by CCD Image Sensor/TWAIN Ver. 1.6 (32 bits)		
Compression Method	MH, MR, MMR		
Resolution/Halftone	600, 400, 300, 200 dpi/Error diffusion		
Scan Speed	75 scan/min (A4)		
Compatible OS/ Scanner Driver	Win 95, 98, WindowsME, NT4.0, 2000.		
Protocol	TCP/IP		
Scan Mode	Text, Image, Text/Image		
2 Sided Scanning	with DADF		
Reduction/Enlargment	141%, 122%, 115%, 100%, 81%, 70%		

### Copier

Copy Speed	A4 LEF	70ipm	60ipm	50ipm
	A3	35ipm	30ipm	28ipm
Duplex Copy 1 to 2, 2 to 2		70ipm#	60ipm#	50ipm#
FCOT	Platen	2.7 sec	2.7 sec	2.7 sec
Resolution/Halftone	600 x 600 dpi plus Edge Enhancement Mode 2400 x 2400 dpi/256 levels			
Reduction/Enlargement	Pre-set 50%, 70% 81%, 86%, 115%, 122%, 141% Zoom 25% - 400% in 1% increment			
Continuous Copy	Maximum	999 copies		
Warm-up Time	Less than 180 seconds			
Automatic Duplex Standard	Constant Velocity Transport method			

Document Feeder	Original Size	A5 - A3
	Capacity (80gsm)	50 sheets
	Weights	55 - 220 gsm (S/ Sided)/ 50 - 105 gsm (D/Sided)
Platen Glass	Original Size	A3 maximum (11" x 17")
Paper Supply	Tray 1	1,000 sheets (A4 - 80 gsm)
	Tray 2 (Multi-tray)	3 x 100 sheets
	Tray 3/ Tray 4	550 sheets each
	HCF	3,600 sheets (A4 - 80 gsm)
Paper Input Sizes		
Tray 1	A5, A5 LEF, 5.5" x 8.5", B5 LEF, A4 LEF, 8.5" x 11" LEF	
Tray 2 (Multi-tray) 2-1	A5, A5 LEF, 5.5" x 8.5", B5 LEF, A4 LEF, 8.5" x 11" LEF	
2-2	A5, A5 LEF, 5.5" x 8.5", B5, B5 LEF, A4, A4 LEF, 8.5" x 11", 8.5" x 11" LEF, 8.5 x 13", 8.5 x 14", B4, Pa Kai, A3, 11" x 17"	
2-3	A5, A5 LEF, 5.5" x 8.5", B5, B5 LEF, A4, A4 LEF, 8.5" x 11", 8.5" x 11" LEF, 8.5" x 13", 8.5" x 14", B4, Pa Kai, A3, 11" x 17"	
Tray 3 & 4	A5, A5 LEF, 5.5" x 8.5", B5, B5 LEF, A4, A4 LEF, 8.5" x 11", 8.5" x 11" LEF, 8.5" x 13", 8.5" x 14", B4, Pa Kai, A3, 11" x 17"	
HCF	B5 LEF, A4, LEF, 8" X 11" LEF	
Type	Console	
Dimensions/Weight	Engine + DADF	620 (W) x 778 (D) x 1080 (H) mm/190 Kg or less

### Offset Catch Tray (option for DC 506 only)

Capacity	500 sheets
Paper Sizes	A6*, B6*, A5*, A5 LEF, 5.5" x 8.5", B5, B5 LEF, A4, A4 LEF, 8.5" x 11", 8.5" x 11" LEF, 8.5" x 13", 8.5" x 14", B4, Pa Kai, A3, 11" x 17"
Paper Weights	56 - 220 gsm

### Finisher/Puncher (standard with DC 606 / 706, option for DC 506)

Capacity	Tray 1	500 sheets
	Tray 2	1,500 sheets (A4)
	Total	2,000 sheets
Paper Sizes Sorted/Stacked	A6*, B6*, A5*, A5 LEF, 5.5" x 8.5", B5, B5 LEF, A4, A4 LEF, 8.5" x 11", 8.5" x 11" LEF, 8.5" x 13", 8.5" x 14", B4, Pa Kai, A3, 11" x 17"	
Stapled	A5 LEF, B5, B5 LEF, A4, A4 LEF, 8.5" x 11", 8.5" x 11" LEF, 8.5" x 13", 8.5" x 14", B4, Pa Kai, A3, 11" x 17"	
Punched	B5 LEF, A4 LEF, 8.5" x 11" LEF, B4, A3, 11" x 17"	
Paper Weights	Throughput	56 - 220 gsm
Staple Capacity	50 sheets	
Staple Positions	Top (Portrait/ Landscape Document) – Angle Dual – Straight	
Staple Cartridge	Per Refill	5,000 staples
Punching Capacity	Per Sheet	56 - 220 gsm

\* Offset sorting not available for these paper size

# Continuous speed A4 LEF collated



THE  
DOCUMENT  
COMPANY  
FUJI XEROX

13 14 12

www.fujixerox.com.au

**Australian Head Office**  
Fuji Xerox Australia Pty Ltd.  
101 Waterloo Rd. North Ryde NSW 2113  
Phone: (02) 9856 5000 Fax: (02) 9856 5003

Fuji Xerox, Xerox, The Document Company and the stylised X are registered trademarks/trademarks. Whilst the information is correct at the time of printing Fuji Xerox Australia Pty Ltd ABN 63000341819 reserve the right to change the specifications of the equipment described herein without notice.

Quality Endorsed Company. ISO 9002. Lic 1950/01 Standards Australia Printed in Australia, August 2001 • DC506, 606 & 706