

THE
DOCUMENT
COMPANY
FUJI XEROX

Document Centre

250, 350 & 400



Performance in the
connected world



digital multifunction

If your business needs gold medal performance, nothing compares to the Xerox team of office digital products.

At Sydney 2000 over 900 Xerox Document Centres will service the Olympic Games' venues.

Print, copy, fax, and scan will help capture the achievements of the world's finest athletes – just imagine what it could do for your business.

Delivering solutions that utilise intelligent digital technology,

unparalleled quality, valuable features and outstanding productivity, Xerox Document Centres bring office efficiency to your fingertips.

From a stand alone copier to a fully networked document hub that prints, scans, faxes and copies, Xerox Document Centres allow you to take a base configuration and tailor a solution for today – whilst offering the flexibility of growth for tomorrow.

Giving you the speed to win in bus

Whether printing or copying at up to an an 40 impressions per minute (imp), or scanning at up to 56 imp, the Xerox Document Centre range delivers high productivity, high speed performance. The Xerox Document Centre 350 & 400 has a flexible upgrade path to su business. Adding a whole new dimension t multi-function, its capabilities include:

- fully networked, A3, high resolution laser printer & copier;
- network and walkup fax;
- high speed network scanner;
- award winning document manipulation and management software;

plus the power of on-line stapling.

Revolutionise the way you work with the Xerox Document Centre 250, 350 & 400, by integrating your paper and electronic documents to maximise your efficiency and productivity.



speed

Be first past the post with the Xerox Document Centre.

The Xerox Document Centre 250, 350 & 400 set new standards of speed in all areas of your office. Whether printing or copying at up to 40 ipm, scanning at up to 56 ipm or sending a fax in just 3 seconds, the Xerox Document Centre has the speed to transform your office – completing your work before the competition has even started.

High speed performance

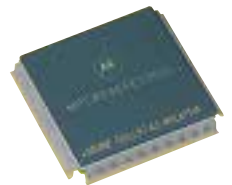
When over 60 per cent of all your copy jobs consist of single copies from one original, it's good to know that the Xerox Document Centre has one of the fastest 'first copy out' speeds of just 3.9 seconds. No waiting, no wasted time.

High speed turnaround

How fast is your office printer? Is it rated at images per minute and performing at minutes per image? The Xerox Document Centre 250, 350 & 400 can print your documents at 25, 35 or 40 ipm respectively.

High performance processor

With printing functionality your jobs are processed at rated speed utilising a super fast 100MHz PowerPC processor and 66MHz 64-bit CPU Bus. Jobs can even be transmitted to the Xerox Document Centre using 100BaseTX Ethernet, and transmitted only once, regardless of the number of sets required.



High speed network scanning

The Xerox Document Centre 250, 350 & 400 can not only produce your documents in record time, with scanning speeds of 56 images per minute, they can also input your documents at lightning speed.

High speed network faxing

Even when sending a fax, the Xerox Document Centre 250, 350 & 400 sets the pace, transmitting your documents at record speed utilising Super G3 Fax standards at 33.6 Kbps.

3 Second fax transmission

Here → There



Imagine, not only are all your documents printed, copied, scanned or faxed at incredible speeds, but everything from collation to stapling is done on-line – that's efficiency!

productivity

In the business world, efficiency is king.

With the Xerox Document Centre 250, 350 & 400 you can print, copy, send faxes, retrieve faxes from your confidential mailbox, and even retrieve scanned documents – without leaving your desk. No longer do you need to print an original then walk to the copier, fax or scanner. With the Xerox Document Centre range you can do it all from your PC.



You can configure the Xerox Document Centre 250, 350 & 400 to be up to five office devices in one; a network A3 duplex laser printer, a powerful office copier, a fast walkup laser fax, a network fax and a network scanner. Now, isn't that productive use of your financial resources?

to a massive 240 MB. Once you have sent your document, you can also check its status on the screen. The days of separate walkup faxes are over.

Clean and efficient

Replacing the consumable parts in the Xerox Document Centre couldn't be easier. The one piece, long-life, cartridge containing the entire image producing mechanism, simply slides in. No mess, no wasted time.

Fax 3D and reality items

Leading the pack when it comes to faxing, the Xerox Document Centre 250, 350 & 400 has high quality scanning and output, automatic image rotation, two sided transmission and reception, and the ability to fax 3D or bulky items direct from the glass – without requiring an additional copy. And this is just the beginning.

Imagine meeting deadlines on complex print jobs with minimum fuss and staff input. The Xerox Document Centre is the answer. With electronic pre-collation and offset output as standard features, plus optional on-line stapling, your prints or copies are produced at high speed, stapled and stacked, ready for distribution.

Each model can be equipped with up to 3 x Super G3 fax lines allowing you to send and receive faxes simultaneously. You can select from 500 pre-programmable numbers, send group faxes and delay transmissions to save money and prevent bottlenecks.

Equipped with high volume paper capacity, Xerox Document Centres are designed to keep you printing. The Xerox Document Centre 250 & 350 boast 2050 sheet input capacity, and the Xerox Document Centre 400 a massive 3050. The four paper trays (plus by-pass tray) automatically switch during production, allowing you to reload whilst printing.

The Xerox Document Centre 250, 350 & 400 come standardised with 10 MB of fax memory which can be upgraded



connectivity

Remote network monitoring means there's no need to leave your desk.

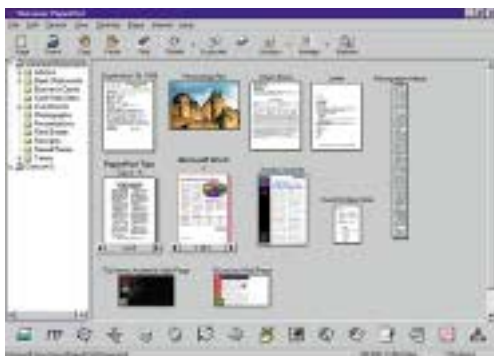
Like elite athletes, Fuji Xerox utilises the latest techniques to optimise and maintain peak performance. The Xerox Document Centre 250, 350 & 400 can be equipped with a 100 MHz PowerPC print processor, a 66 MHz 64-bit CPU Bus, high-speed SDRAM and a 2.1 GB hard disk all connected to your network using 100BaseTX Ethernet. Not only can you connect the Xerox Document Centre 250, 350 & 400 to your network, but you can automatically switch between input interfaces, protocols and PDLs with ease. If you need performance in the connected world, the Xerox Document Centre has the answer.

Superior print quality

Printing at 600 x 600 dpi and using edge enhancement up to 2400 dpi, the Xerox Document Centre 250, 350 & 400 produce clean, crisp results that reflect your professionalism.

Total document management

Xerox document management software allows you to combine files from different sources e.g. Word, Excel, PowerPoint, Acrobat and manage them as a single document. Existing hard copy documents can also be easily integrated thanks to the network scanning function. Include the award winning Xerox Textbridge Pro OCR software and you have a powerful document solution that allows you to save scanned documents in both editable and searchable formats.



CentreWare Network Services

With the added benefits of Xerox CentreWare you will always be in control of your documents, both electronic and paper. If you are an administrator you can remotely install, configure and manage your Xerox Document Centres on the network. For the user, you don't have to leave your desk to see if your print job has been completed, or to check that the selected Xerox Document Centre has sufficient paper. Xerox CentreWare does the job – allowing you to get on with yours.

CentreWare Scanning Services

In addition to the standard network scanning available with your Xerox Document Centre 250, 350 & 400 you can add CentreWare Scanning Services and integrate scanning into your everyday work processes. Just set your scanning attributes at your desktop, select an icon on your Xerox Document Centre and your scanning is automated. Your images can even appear on your desktop automatically, or stay on the server for later reference. That's total control.



specifications

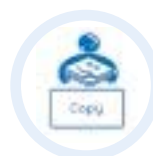
Copier

		Xerox Document Centre		
		400	350	250
Copy Speed	A4 (LEF)	40 ipm	35 ipm	25 ipm
	A4	30 ipm	28 ipm	20 ipm
	A3	18 ipm	18 ipm	14 ipm
FCOT	A4 (LEF)	3.9 seconds		
Document Feeder	Standard	Duplex Automatic Document Feeder		
	Original Sizes	A5 LEF, B5, B5 LEF, A4, A4 LEF, B4, A3		
	Capacity (80 gsm) Weights	50 sheets plus Job Build 55 – 110 gsm		
Platen Glass	Original Sizes	Maximum A3 (11 x 17")		
Document Memory		100 A4 images (2 GB)		
Resolution	Input and Output	600 x 600 dpi		
Half Tone		256 Levels		
Paper Supply	Tray 1	500	500	500
	Tray 2	500	500	500
	Tray 3	1,000	500	500
	Tray 4	1,000	500	500
	By pass	50	50	50
	Total	3,050	2,050	2,050
Paper Weights	Trays	1 – 4 60 – 90 gsm		
	By-pass	55 – 190 gsm		
Paper Input Sizes	Tray 1	A5 LEF, B5, A4, A4 LEF, Letter, B4, A3, 11 x 17"		
	Tray 2	B5, A4, A4 LEF, Letter, B4, A3, 11 x 17"		
	Tray 3	A4 LEF, B5 LEF, Letter B5, A4, A4 LEF, Letter, B4, A3, 11 x 17"		
	Tray 4	A4 LEF, B5 LEF, Letter B5, A4, A4 LEF, Letter, B4, A3, 11 x 17"		
	By-pass	A6 – A3 (11 x 17")		
Duplex	Standard	Inverter		
	Paper Sizes	A5 – A3		
Electronic Sorting	Standard	Yes – including offset output		
Reduction/Enlargement	Zoom	25 – 400% (in 1% increments)		
	Pre-set	57%, 61%, 70%, 81%, 86%, 115%, 122%, 141%, 163%, 173% (programmable)		
Continuous Copy	Maximum	99 sets		
Type		Console		
Dimensions	W x D x H	660 mm x 669 mm x 1118 mm		
Max. Operating Space	W x D	1020 mm x 1487 mm		
Weight	Standard Config.	< 121 kg		
Other		Mixed Size Originals Booklet ModeBook Copy Job Build		

Printer

		Xerox Document Centre		
		400	350	250
Resolution	Engine	600 x 600 dpi / 400 x 400 dpi		
	Edge Enhancement	2400 dpi		
Print Speed	True Type or Printer Font	40 ipm†	35 ipm†	25 ipm†
CPU		100 MHz PowerPC 603e		
Memory	Standard	32 MB (16 MB RAM + 16 MB SDRAM)		
	Optional (Max)	64 MB SDRAM		
	Hard Disk Drive	2.1 GB (optional)		
PDL	Standard	PCL5e / PCL6*		
	Optional	Adobe PostScript3		
Drivers	Standard	Windows 3.1x, Windows 95/98, Windows NT4.0		
Protocols		TCP/IP, IPX/SPX, EtherTalk		
Interface	Standard	Parallel (IEEE1284), Serial RS232C		
	Network Interface Card	100BaseTX / 10BaseT / 10Base5 (optional)		
Fonts	PCL	45 Roman		
	PostScript3	136 Roman (optional)		
Functions Available		Duplex, Sort, Collate, Staple		
Software		Xerox CentreWare Network Services		

*Available post launch for Windows NT4.0†



Scanner

Xerox Document Centre 400, 350 & 250

Network	Scanning Scan to PC Scan to Server/PC	Yes – via confidential mailbox Yes – via NT Server*
Scanning Speed	A4 LEF	56 ipm (Scan to confidential mailbox)
Scanning System		Fixed using CCD image sensor
Resolution		200 x 200 dpi, 300 x 300 dpi, 400 x 400 dpi, 600 x 600 dpi
Half Tone		256 Levels
Document Input	DADF Platen	Yes – 50 sheets plus Job Build Yes – plus Job Build
Scanning Sizes		A5 LEF, B5 LEF, A4, A4 LEF, B4, A3
Document Type		Text, Text / Photo, Photo
Density		5 steps
Compression		MH / MR / MMR
Reduce / Enlarge	</= 400 dpi 600 dpi	50 – 400% (in 1% increments) 50 – 133% (in 1% increments)
Connectivity	Network	Yes
System Requirements (min)	Hardware Protocol Client	Printer and Fax Upgrade, Network Interface Card TCP/IP Windows 95/98, Windows NT4.0
Interface	Scan to PC	TWAIN ver.1.6 (32 / 16 Bit) compatible

* Optional Xerox CentreWare Scanning Services required

Output

On-Line Stapler/Finisher

Output Capacity	Trays 1 – 3 Total	670 Sheets (A4) each 2,010 Sheets
Staple Capacity		2 – 50 sheet (80gsm)
Staple Positions		Top Left, Top Right, Dual
Paper Sizes		A5 LEF, B5, B5 LEF, A4, A4 LEF, B4, A3 5.5 x 8.5" LEF, 8.5 x 11" SEF & LEF 8.5 x 13" SEF, 8.5 x 14" SEF, 11 x 17" SEF
Paper Weight		60 – 90 gsm
Dimensions		W x D x H(mm) 663 x 658 x 1026 – 1600

Facsimile

Walkup Facsimile Specifications Xerox Document Centre 400, 350 & 250

Transmission Speed	Super G3	33.6 Kbps (3 seconds*)
Scanning Speed	A4 LEF	56 ipm (1.07 seconds per page)
Memory	Standard Optional	10 MB (650 pages CCITT#1) 240 MB Hard Disk Drive
Dual Access	Standard	Yes
Multiple Lines	Super G3	Maximum 3 lines (Optional upgrade)
Simultaneous Send/Receive		Yes with optional Multiple lines
Speed Dials		500 (70 One Touch)
Group Dial		10 groups of 20 numbers each
Broadcast Send		Up to 549 locations
Originals	DADF Platen Glass	Cut Sheet, Max A3 plus Job Build Cut Sheet and Book, Max A3 plus Job Build
Receive recording size		A5 - A3
Data Compression		MH, MR, MMR

Network Xerox Document Centre 400, 350 & 250

Transmission Speed	Super	G3 33.6 Kbps (3 seconds*)
Transmission	Standard	200 x 100 dpi
Resolution	High Super High	200 x 200 dpi 400 x 400 dpi
Compression		MH / MR / MMR
Drivers		Windows 3.1x, Windows 95/98, Windows NT4.0
Connectivity		Parallel, Serial or Network Interface Card
Hardware required (min)		Printer Upgrade, Fax Upgrade

*When an A4 document of about 700 characters is sent in standard image quality mode at maximum speed

General

Engine		Digital Laser Xerography
Customer Replaceable Unit (CRU)		Single Piece
	Yield (A4)	26,000 images at 5% coverage
Warm-Up Time	At 20°C	48 seconds
Energy Consumption	Max Standby Power Save	1340w 78w (Digital Copier) 5w (Digital Copier)





FUJI XEROX

Official Document
Publishing Partner of the
2000 Olympic Games™

Document Centre

250, 350 & 400

total range



Xerox Document Centre 250

- 25 images per minute @600dpi
- 2050 Total paper capacity from 5 sources
- Double siding and collation as standard
- Print, Fax, Scan, and On-line finishing options

Xerox Document Centre 350

- 35 images per minute @600dpi
- 2050 Total paper capacity from 5 sources
- Double siding and collation as standard
- Print, Fax, Scan, and On-line finishing options



Xerox Document Centre 400

- 40 images per minute @600dpi
- 3050 Total paper capacity from 5 sources
- Double siding and collation as standard
- Print, Fax, Scan, and On-line finishing options

Xerox Document Centre 340

- 40 images per minute @600dpi
- 4050 Total paper capacity from 6 sources
- Print, double siding, collation, and in-built auditron as standard
- Fax, Scan, and On-line finishing options



Xerox Document Centre 451

- 45 images per minute @600dpi
- 4800 Total paper capacity from 6 sources
- Double siding @45ipm, Collation and in-built auditron as standard
- Print, Scan, and On-line finishing options

Xerox Document Centre 551

- 55 images per minute @600dpi
- 4800 Total paper capacity from 6 sources
- Double siding @55ipm, Collation and in-built auditron as standard
- Print, Scan, and On-line finishing options



Xerox Document Centre 265

- 65 images per minute @600dpi
- 5150 Total paper capacity from 6 sources
- Double siding, On-line finishing and in-built auditron as standard
- Print and Scan options



THE
DOCUMENT
COMPANY
FUJI XEROX
13 14 12

www.fujixerox.com.au

Australian Head Office
Fuji Xerox Australia Pty Ltd.
101 Waterloo Rd North Ryde NSW 2113
Phone: (02) 9856 5000 Fax: (02) 9856 5003

Fuji Xerox, The Document Company and the stylised X are registered trademarks/trademarks. Whilst the information is correct at the time of printing Fuji Xerox Australia Pty Ltd ACN 000 341 819 reserve the right to change the specifications of the equipment described herein without notice

Printed in Australia, October 1999 • DC50/350/400